

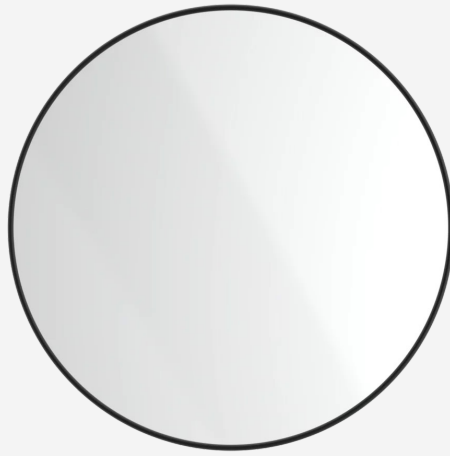
Wall Mounted Mirror / Circular

TSL.MR10

The TSL.MR10 is an elegant circular mirror made from stainless steel and is available in 5 finish options, including 4 PVD colors, making it a stylish and functional addition to any restroom.

Finish	Codes
● Satin	TSL.MR10.CS
● Black	TSL.MR10.BK
● Brass	TSL.MR10.BR
● Copper	TSL.MR10.CP
● Bronze	TSL.MR10.BZ

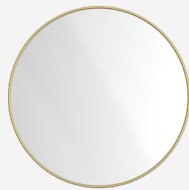
+ Black



+ Bronze



+ Brass



+ Copper

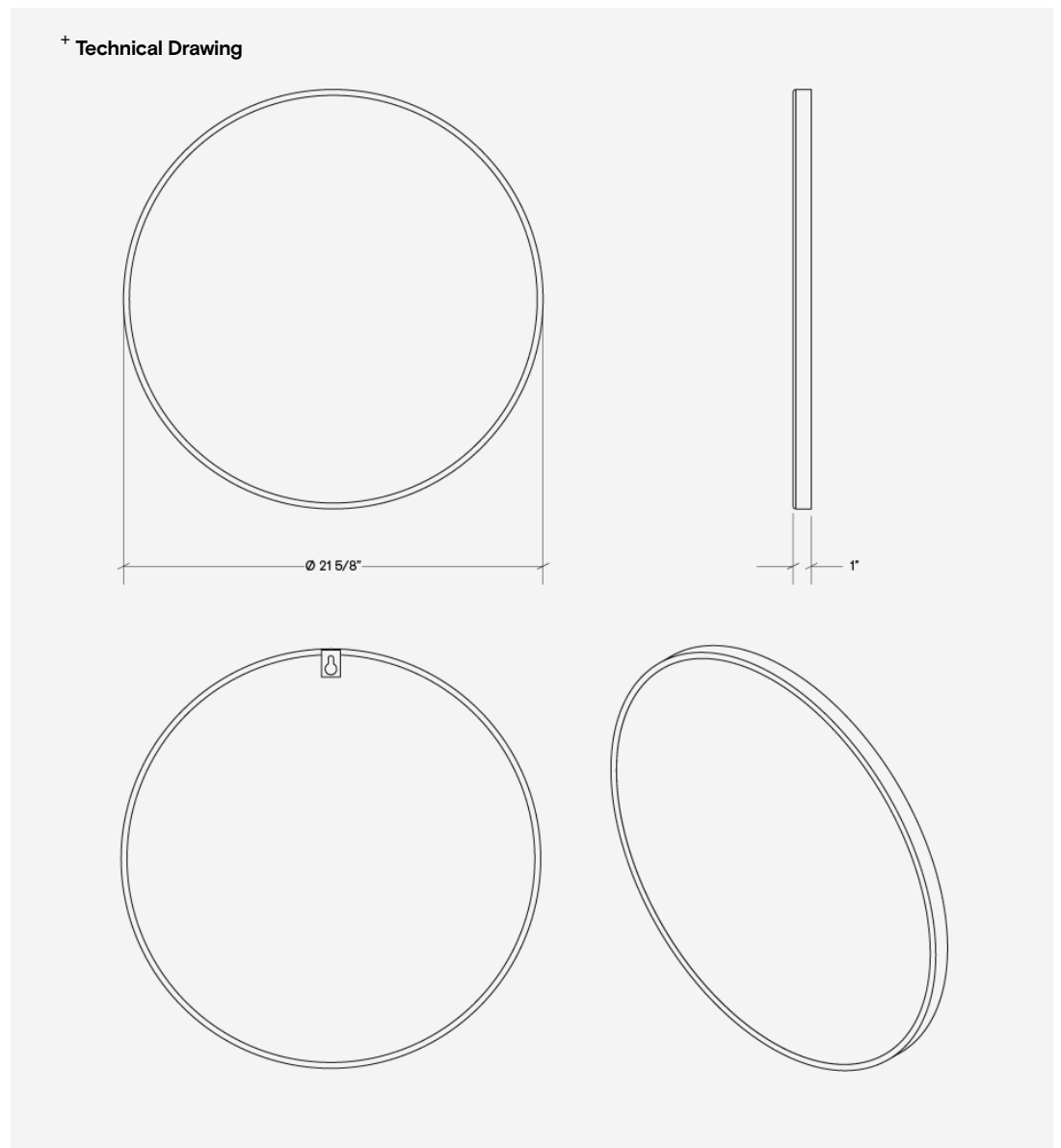


+ Satin



Included

PVD Mirror Circular
TSL.MR10



Warranty

TSL backs every accessory with a lifetime guarantee against material defect in the finish.
For warranty terms and conditions please visit www.thesplashlab.com/usa/warranty

Replacement Parts

Please contact The Splash Lab at info.usa@thesplashlab.com for further information.